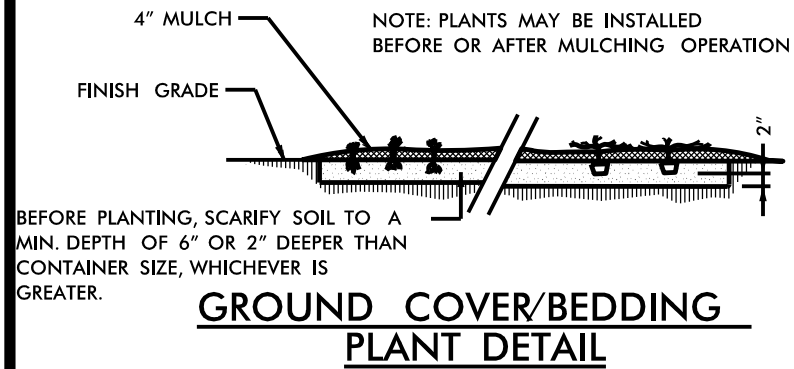
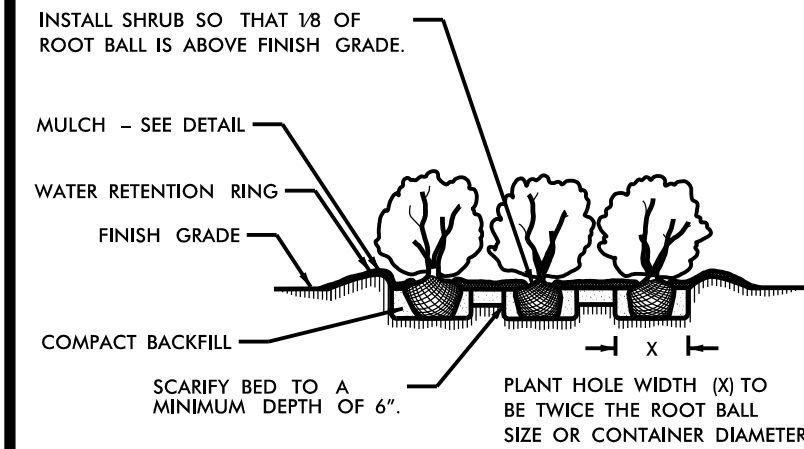


TREE OR SHRUB PLANTING DETAIL
(LEVEL GROUND)

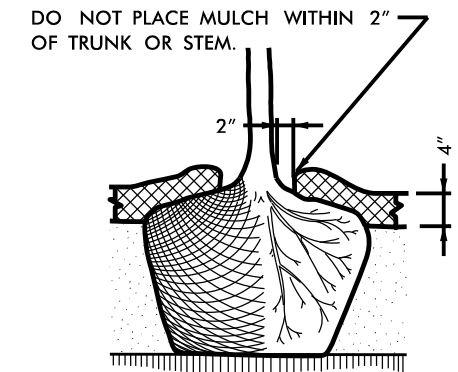
TREE OR SHRUB PLANTING DETAIL
(SLOPING GROUND)



GROUND COVER/BEDDING PLANT DETAIL



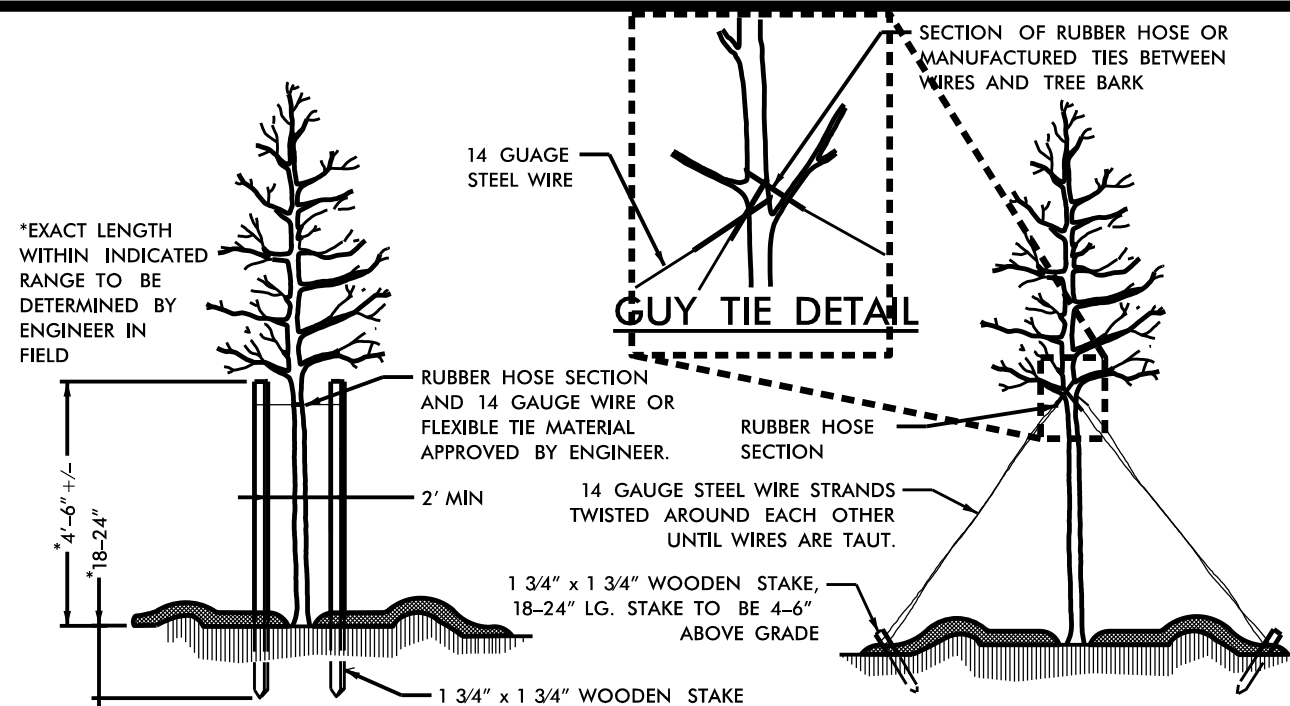
SHRUB BED PLANTING DETAIL



MULCH DETAIL

NOTES:

- SCHEDULE FOR PLANT HOLE SIZE: PLANT HOLE WIDTH (X) TO BE TWICE THE ROOT BALL SIZE OR CONTAINER DIAMETER.
- SEE STANDARD SPECIFICATIONS FOR PLANT BED FUMIGATION AND HERBICIDAL TREATMENT.
- APPLY FERTILIZER AT PLANTING TIME IN THE FORM OF A SLOW RELEASE PELLET OR TABLET. APPLY AT RATE RECOMMENDED BY MANUFACTURER. BOTH RATE AND FORMULATION MUST BE APPROVED BY FIELD ENGINEER PRIOR TO APPLICATION.
- REMOVE WIRE BASKET AND FOLD BURLAP BACK FROM TOP OF ROOT BALL BEFORE BACKFILLING IS COMPLETE.
- ALL PRUNING TO FOLLOW STANDARD ARBORICULTURAL PRACTICES AS SPECIFIED BY INTERNATIONAL SOCIETY OF ARBORICULTURE.
- DO NOT ATTEMPT TO STRAIGHTEN A TREE THAT HAS BEEN PLANTED AT AN ANGLE WITH THE USE OF STAKING OR GUYING. DIG TREE AND REPLANT TO UPRIGHT POSITION.



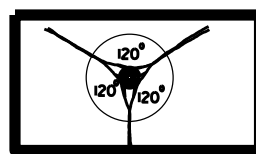
GUY TIE DETAIL

PLAN VIEW

STAKING DETAIL

(TREES 6'-10')

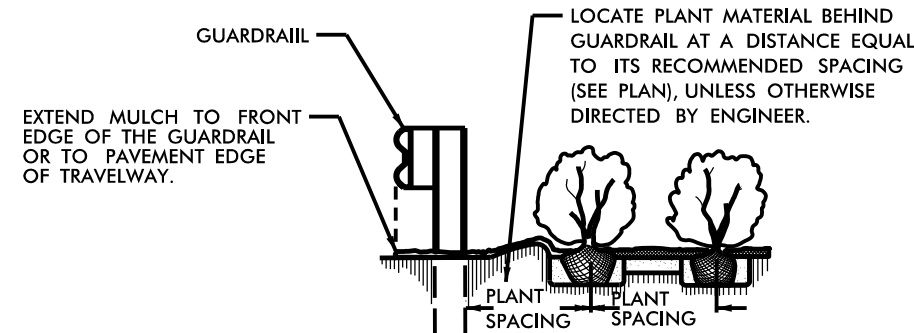
USE AS DIRECTED BY FIELD ENGINEER



PLAN VIEW

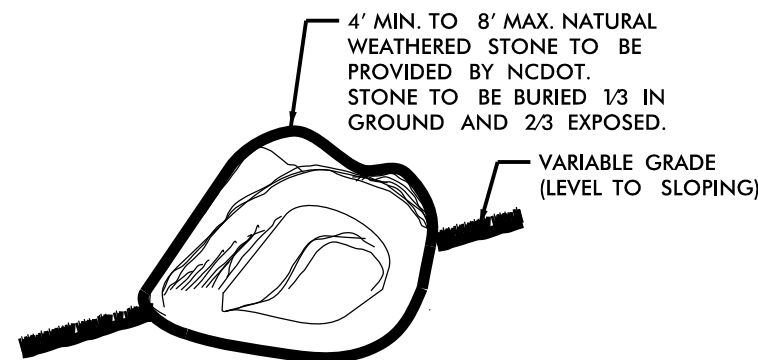
GUYING DETAIL
(TREES 10' OR LARGER)

USE AS DIRECTED BY FIELD ENGINEER



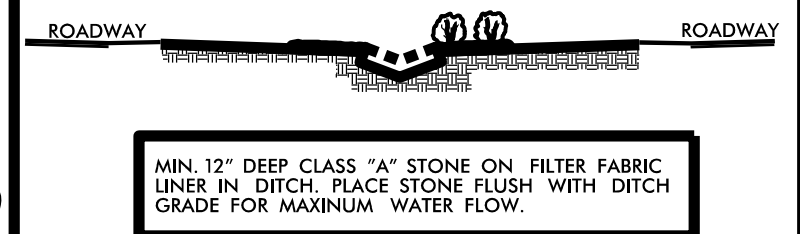
GUARDRAIL MULCHING DETAIL

USE AS DIRECTED BY FIELD ENGINEER



BOULDER PLACEMENT DETAIL
TYPICAL

SCALE: NTS



CLASS "A" STONE DITCH LINING DETAIL

Planting Details



PROJECT TITLE:

Plans Drawn By:

Kyle Cooper

Scale

AS NOTED

Date

10 / 21 / 14

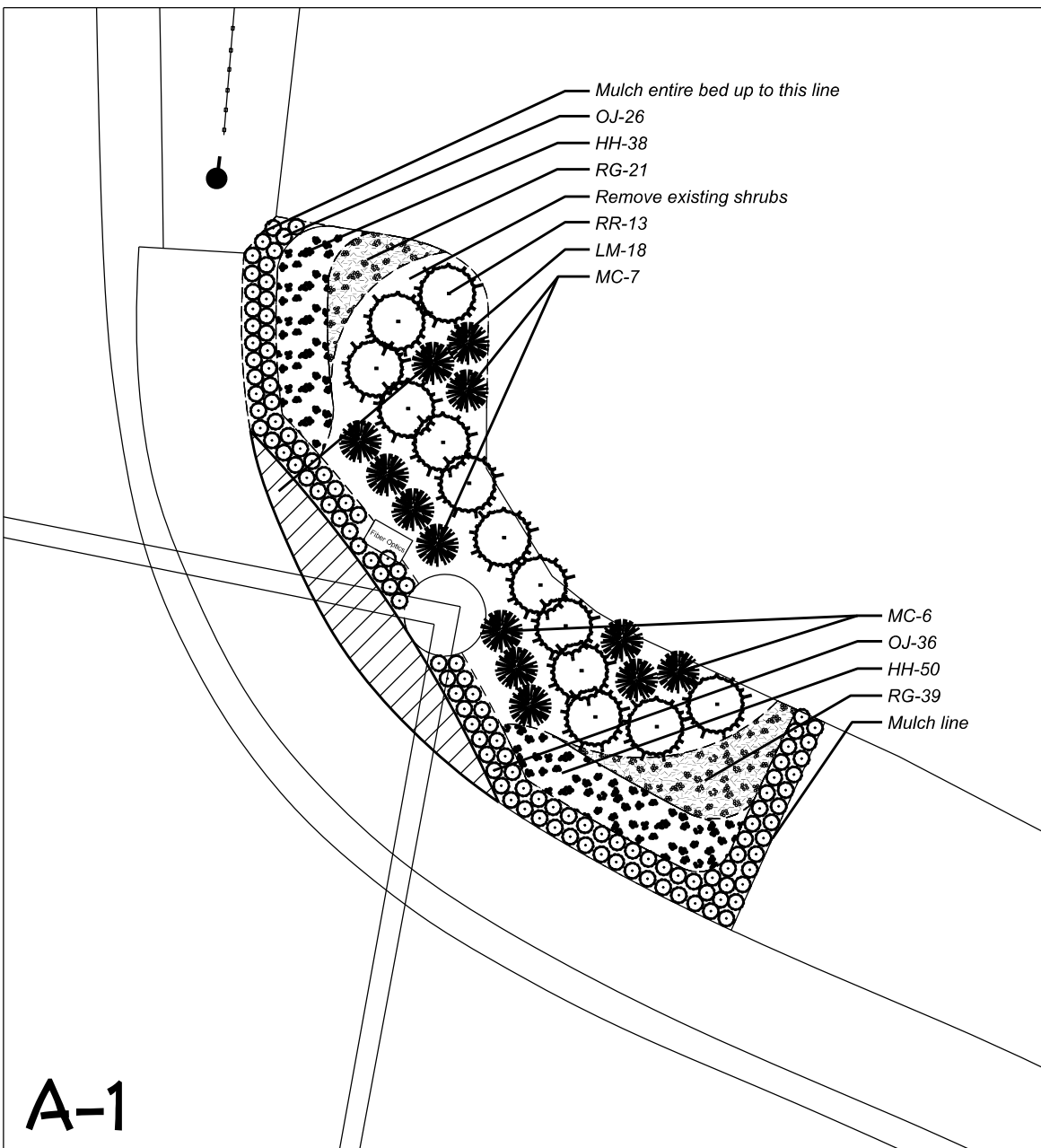
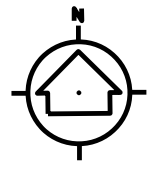
Sheet Description

L.P. #

U-4733

Sheet #

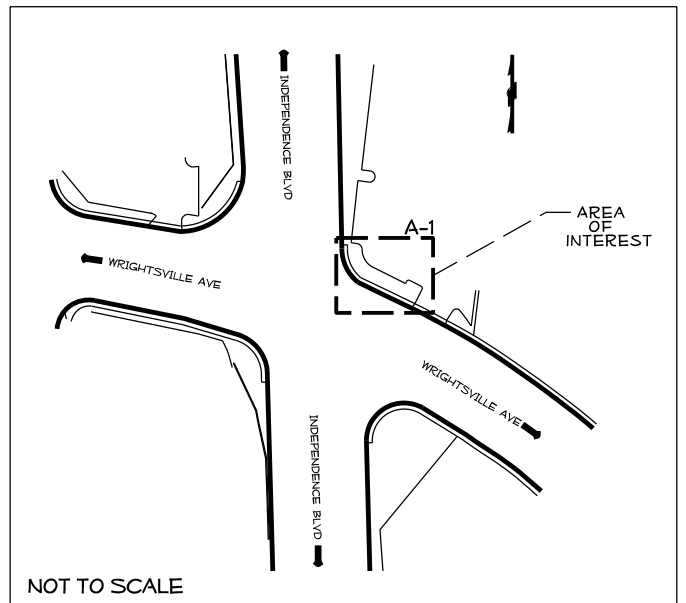
L-2



PLANT LIST

Key	Scientific Name	Common Name	Furnish	Remarks
Trees				
TO	<i>Thuja occidentalis</i>	'Smaragd'	American Arborvitae	B&B As shown
Shrubs				
MC	<i>Muhlenbergia capillaris</i>	Pink Muly Grass	#3 Cont.	2.5' O.C.
RR	<i>Rosa 'Radsunny'</i>	Sunny Knockout Rose	#2 Cont.	3' O.C.
Grasses/Groundcovers/Perennials				
HH	<i>Hemerocallis 'Little Business'</i>	Little Business Daylily	#1 Cont.	12" O.C.
LM	<i>Lantana montevidensis</i>	Creeping Lantana	#1 Cont.	2' O.C.
OJ	<i>Ophiopogon japonicus</i>	Mondo Grass	#1 Cont.	18" O.C.
RG	<i>Rudbeckia fulgida</i>	'Goldstrum'	Goldstrum Black-eyed Susan	#1 12" O.C.

KEY



\$\$\$\$\$SYTIME\$\$\$\$\$
\$\$\$\$\$SUBSERNAME\$\$\$\$\$



NCDOT - ROADSIDE ENVIRONMENTAL UNIT
 LANDSCAPE DESIGN & DEVELOPMENT
 1557 MAIL SERVICE CENTER RALEIGH NC 27699-1557
 PH: 919-707-2935 FAX: 919-715-2554
[HTTP://WWW.NCDOT.ORG/DOH/OPERATIONS/DP_CHIEF_ENG/ROADSIDE/](http://www.ncdot.org/DOH/OPERATIONS/DP_CHIEF_ENG/ROADSIDE/)

REV. DESIGNER
**WRIGHTSVILLE AVE. AND
 INDEPENDENCE BLVD. DESIGN**
 CONTRACT #: **3703.3.41**

REV. DESIGNER
Kyle Cooper

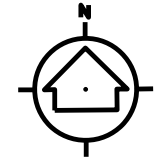
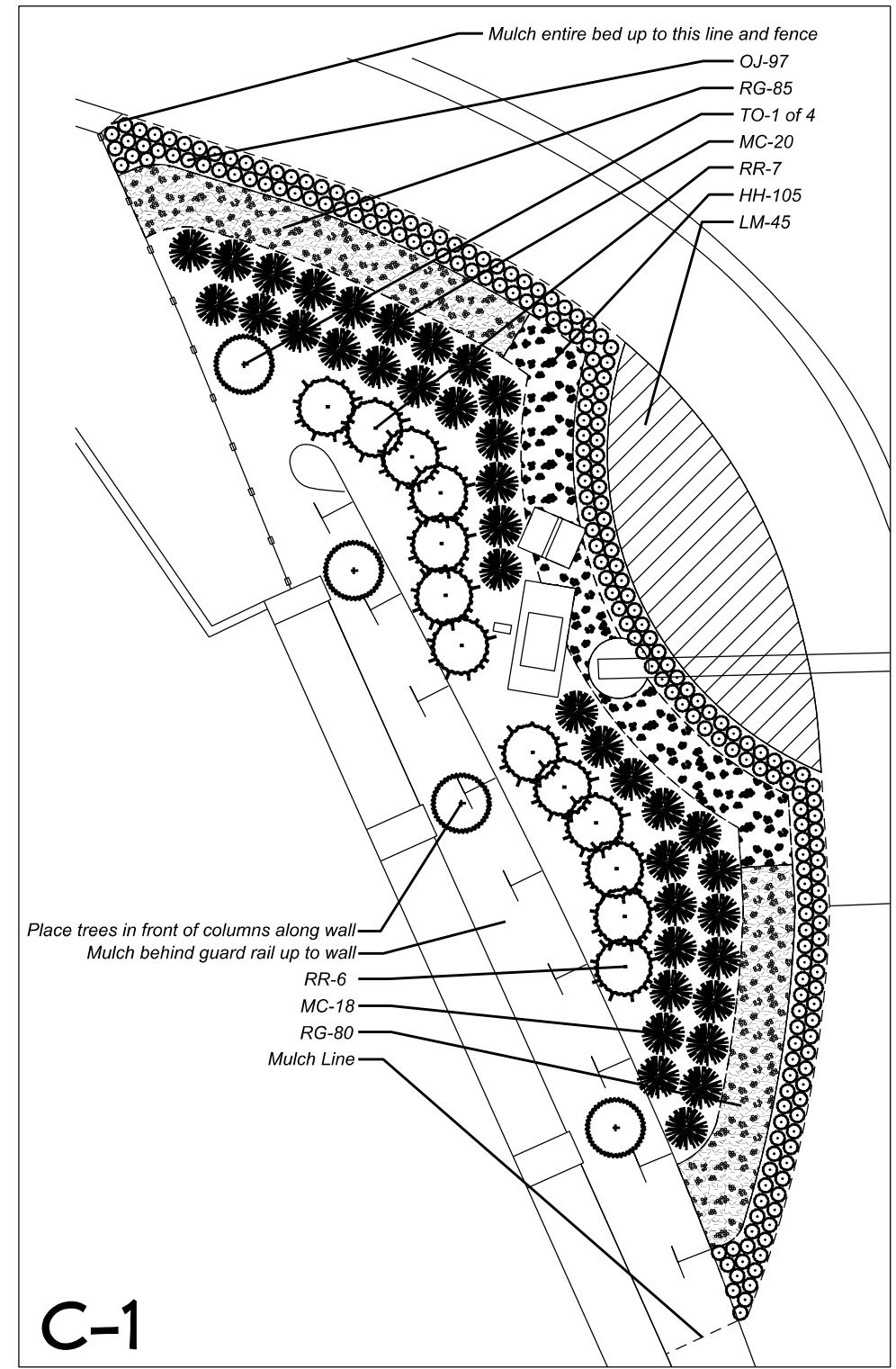
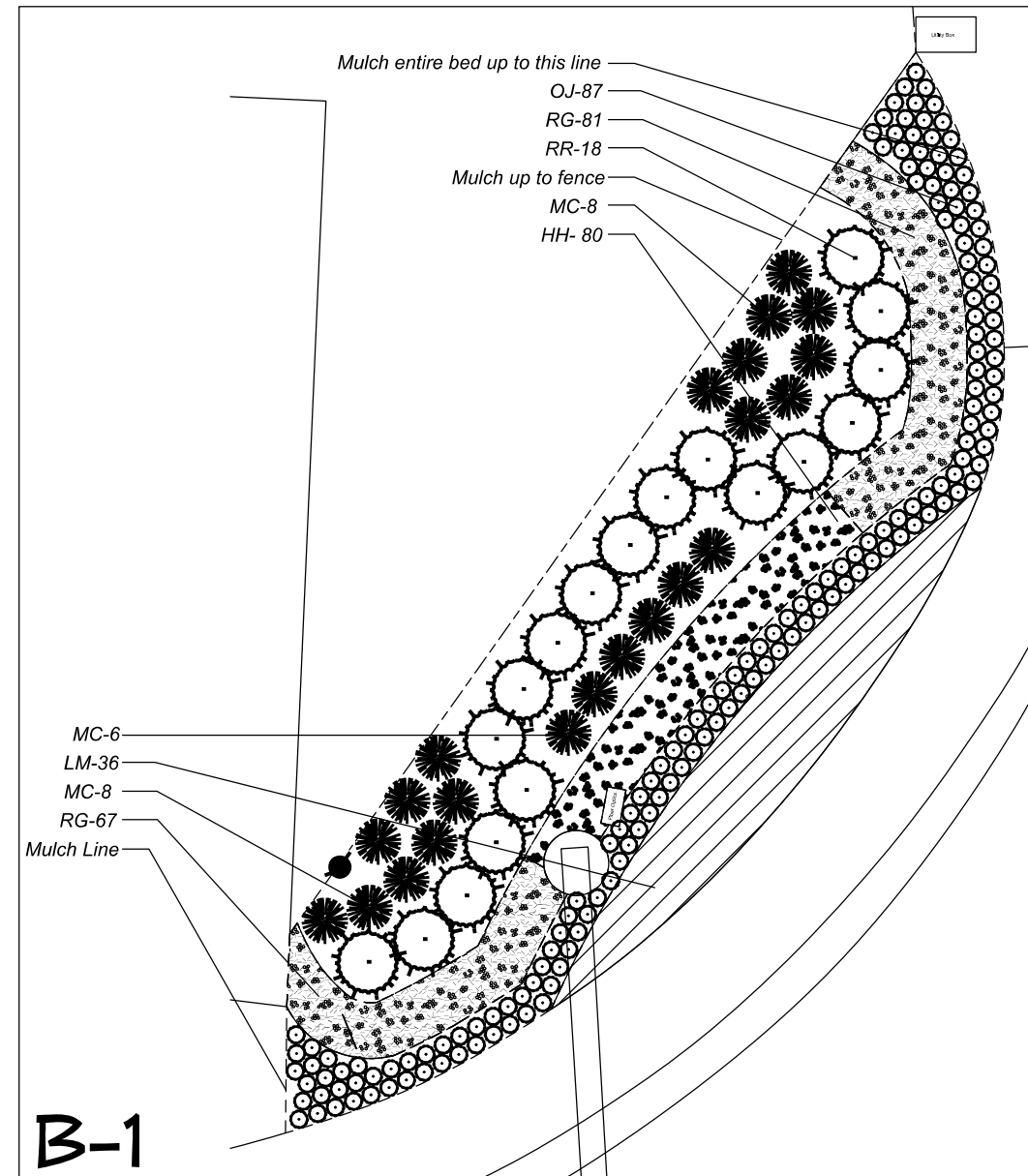
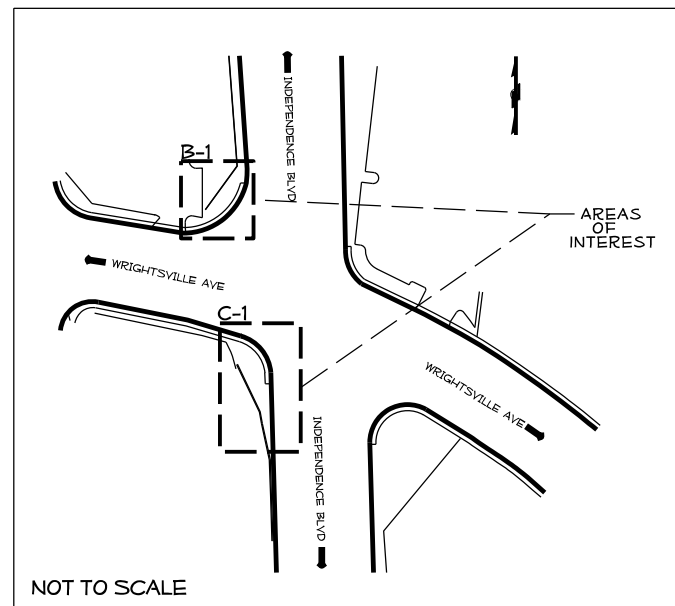
SHEET DESCRIPTION:	PREL. DESIGN DATE: OCT. 2014
	CHECKED BY & DATE:
	FINAL DESIGN DATE: OCT 2014

ENHANCEMENT PLAN
LANDSCAPE PLAN SHEET



T.I.P. # U-4733
WBS # 3703.3.41
FED I.D. #
SHEET NO: L-3 TOTAL SHEET NO: 5

KEY



PLANT LIST

Key	Scientific Name	Common Name	Furnish	Remarks
Trees				
TO	<i>Thuja occidentalis</i>	'Smaragd'	American Arborvitae	B&B As shown
Shrubs				
MC	<i>Muhlenbergia capillaris</i>	Pink Muly Grass	#3 Cont.	2.5' O.C.
RR	<i>Rosa 'Radsunny'</i>	Sunny Knockout Rose	#2 Cont.	3' O.C.
Grasses/Groundcovers/Perennials				
HH	<i>Hemerocallis</i>	'Little Business'	Little Business Daylily	#1 Cont. 12" O.C.
LM	<i>Lantana montevidensis</i>	Creeping Lantana	#1 Cont.	2' O.C.
OJ	<i>Ophipogon japonicus</i>	Mondo Grass	#1 Cont.	18" O.C.
RG	<i>Rudbeckia fulgida</i>	'Goldstrum'	Goldstrum Black-eyed Susan	#1 12" O.C.



\$\$\$\$\$SYTIME\$\$\$\$\$
 \$\$\$SERNAME\$\$\$\$\$



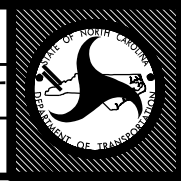
NCDOT - ROADSIDE ENVIRONMENTAL UNIT
 LANDSCAPE DESIGN & DEVELOPMENT
 1557 MAIL SERVICE CENTER RALEIGH NC 27699-1557
 PH: 919-707-2935 FAX: 919-715-2554
[HTTP://WWW.NCDOT.ORG/DOH/OPERATIONS/DP_CHIEF_ENG/ROADSIDE/](http://www.ncdot.org/DOH/OPERATIONS/DP_CHIEF_ENG/ROADSIDE/)

WRIGHTSVILLE AVE. AND
 INDEPENDENCE BLVD. DESIGN
 CONTRACT #: 3703.3.41

PREP. DESIGNER

SHEET DESCRIPTION:	PREL DESIGN DATE: OCT 2014
	CHECKED BY & DATE:
	FINAL DESIGN DATE: OCT 2014

ENHANCEMENT PLAN
 LANDSCAPE PLAN SHEET

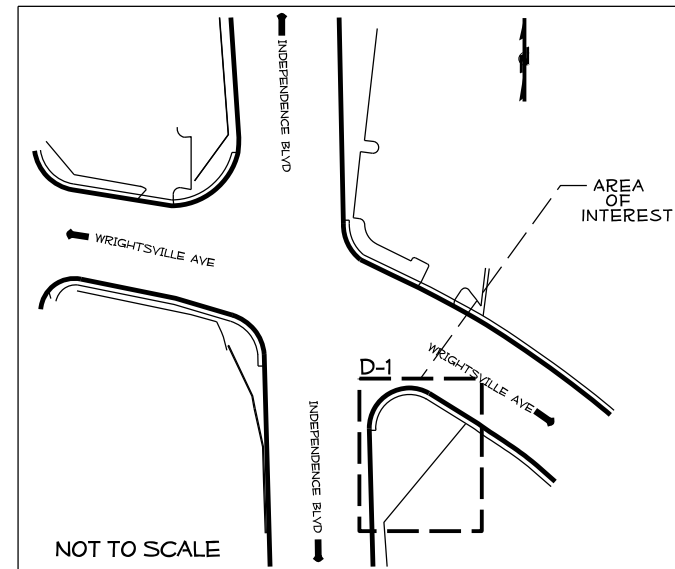


T.I.P. # U-4733
WBS # 3703.3.41
FED I.D. #
SHEET NO: L-4
TOTAL SHEET NO: 5

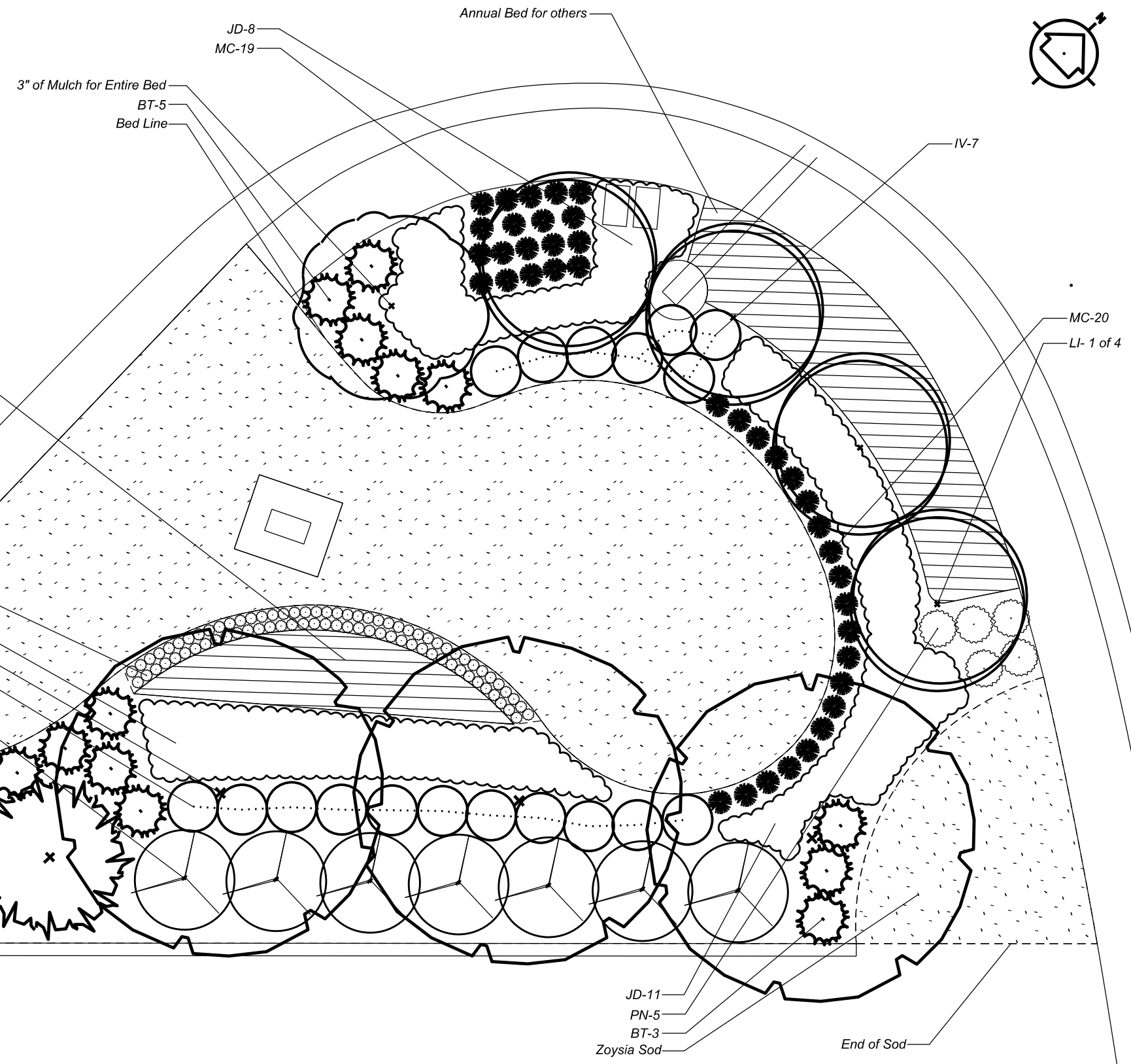
PLANT LIST

Key	Scientific Name	Common Name	Furnish	Remarks
Trees				
AP	<i>Acer palmatum</i> 'BloodGood'	BloodGood Japanese Maple	#15Cont.	2 1/2" Cal.
LI	<i>Lagerstroemia indica</i> 'Muskagee'	Muskagee Crepe Myrtle	B&B	
PS	<i>Prunus serrulata</i>	Yoshino Cherry	B&B	Cal. 2 1/2"-3"
Shrubs				
BT	<i>Berberis thunbergii</i>	Japanese Barberry	#3 Cont.	4' O.C.
IN	<i>Ilex 'Nellie R. Stevens'</i>	Nellie Stevens Holly	#25 Cont.	12" O.C.
IV	<i>Ilex vomitoria</i> 'Nana'	Dwarf Yaupon	#3 Cont.	4' O.C.
JD	<i>Juniperus davurica</i> 'Parsonii'	Parsons Juniper	#3 Cont.	5' O.C.
PT	<i>Pittosporum tobira</i>	Pittosporum	#7 Cont.	8' O.C.
PN	<i>Pittosporum tobira</i> 'Nana'	Wheeler's Dwarf	#3 Cont.	3' O.C.
Grasses/Groundcovers/Perennials				
MC	<i>Muhlenbergia capillaris</i>	Pink Muly Grass	#3 Cont.	2' O.C.
OJ	<i>Ophipogon japonicus</i>	Mondo Grass	#1 Cont.	12" O.C.

KEY



IN-2
Zoysia Sod variety to be approved by engineer
End of Sod



\$\$\$\$\$SYTIME\$\$\$\$\$
\$\$\$\$\$SDGN\$\$\$\$\$
\$\$\$\$\$SERNAME\$\$\$\$\$



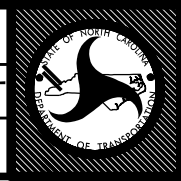
NCDOT - ROADSIDE ENVIRONMENTAL UNIT
LANDSCAPE DESIGN & DEVELOPMENT
 1557 MAIL SERVICE CENTER RALEIGH NC 27699-1557
 PH: 919-707-2935 FAX: 919-715-2554
[HTTP://WWW.NCDOT.ORG/DOH/OPERATIONS/DP_CHIEF_ENG/ROADSIDE/](http://www.ncdot.org/DOH/OPERATIONS/DP_CHIEF_ENG/ROADSIDE/)

**WRIGHTSVILLE AVE. AND
 INDEPENDENCE BLVD. DESIGN**
 CONTRACT #: 3703.3.41

REV. DESIGNER

PREL DESIGN DATE:	OCT. 2014
CHECKED BY & DATE:	
FINAL DESIGN DATE:	OCT 2014

ENHANCEMENT PLAN
LANDSCAPE PLAN SHEET



T.I.P. # U-4733
WBS # 3703.3.41
FED I.D. #
SHEET NO: L-5
TOTAL SHEET NO: 5